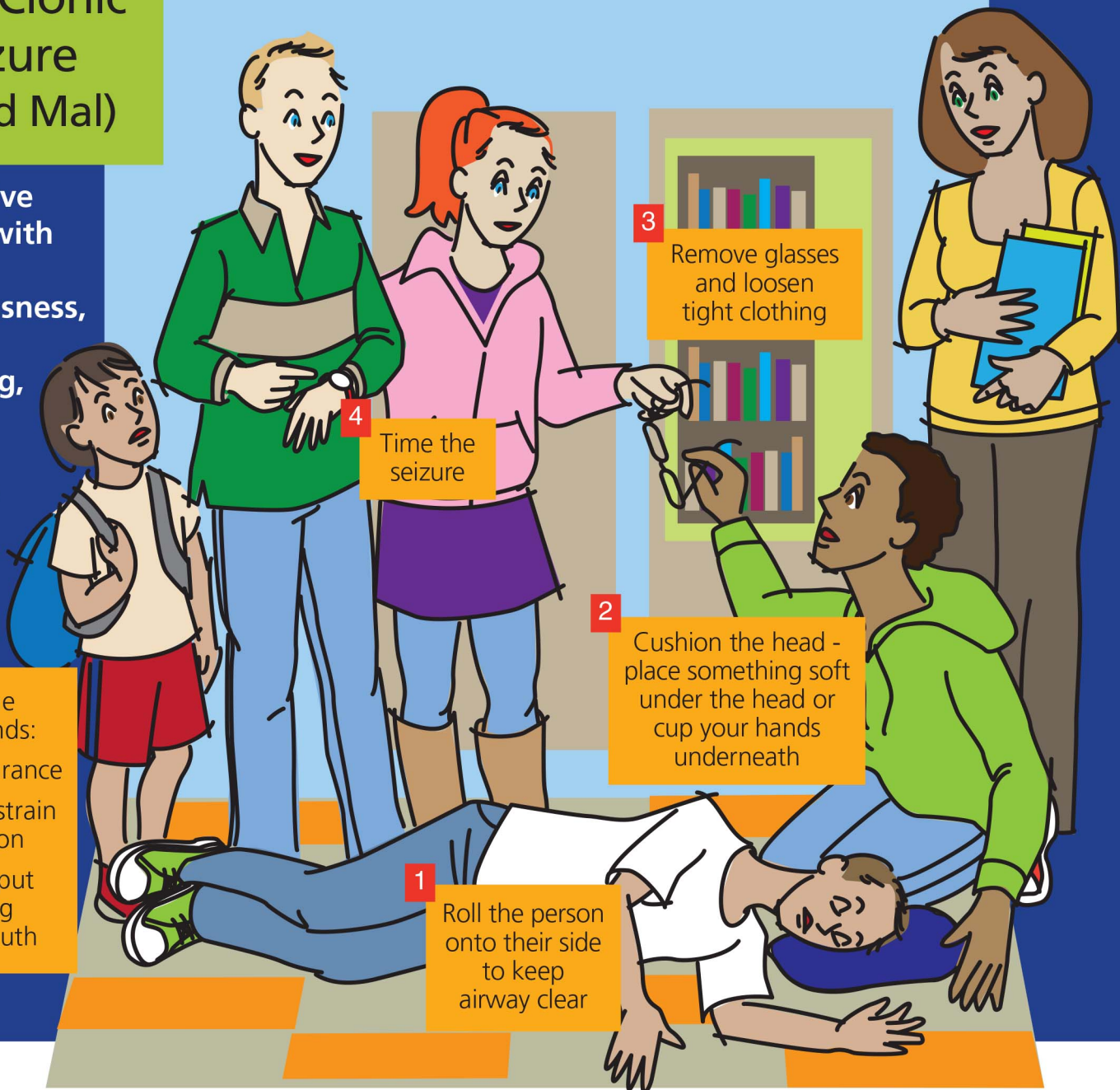


Seizure First Aid

Tonic Clonic Seizure (Grand Mal)

Convulsive seizure with loss of consciousness, muscle stiffening, falling, jerking motions



Complex Partial Seizure

Non-convulsive seizure with signs of confusion, unresponsiveness or inappropriate behavior. Altered consciousness and total loss of awareness. May be mistaken for alcohol or drug intoxication.

- DO NOT restrain the person
- Gently guide from behind
- Time the seizure
- After the seizure ends, offer reassurance

When to call 911:

You know, or believe it to be, the person's first seizure

If the seizure lasts more than 5 minutes

You feel uncomfortable dealing with the situation

If the person is injured